



Swie.io



## About Swie

Radu Diaconescu

[radu@swie.io](mailto:radu@swie.io)

June 2016

“We are an Industry 4.0 company,  
building world’s largest distributed  
manufacturing network!”

# Traction



***Altium***

Committee of OML  
(Smart factory communication  
protocol standardization body)

35 customers from 10 countries  
Access to 45% market share



# Team



**Benjamin Zhai**, CEO, 4x serial entrepreneur, 1 exit 20MM in semiconductor.

**Bin Chen**, CTO. Vice Dean of China Unicom Software Research Center.

**Aubrey Mnisi**, co-founder. MES/ERP architecture expert. Ex SAP.

**Radu Diaconescu**, co-founder. Ex Honeywell. EPFL Master in Management.



**Honeywell**



**ERICSSON** 

**Schneider**  
Electric



**Nestlé**

## RloT Engineers

**Michael Frey**, Lead Embedded Software Engineer

**Florent Coen**, RloT Engineer




There will be **50** billion IoT devices by 2020.



# Desperate Factories

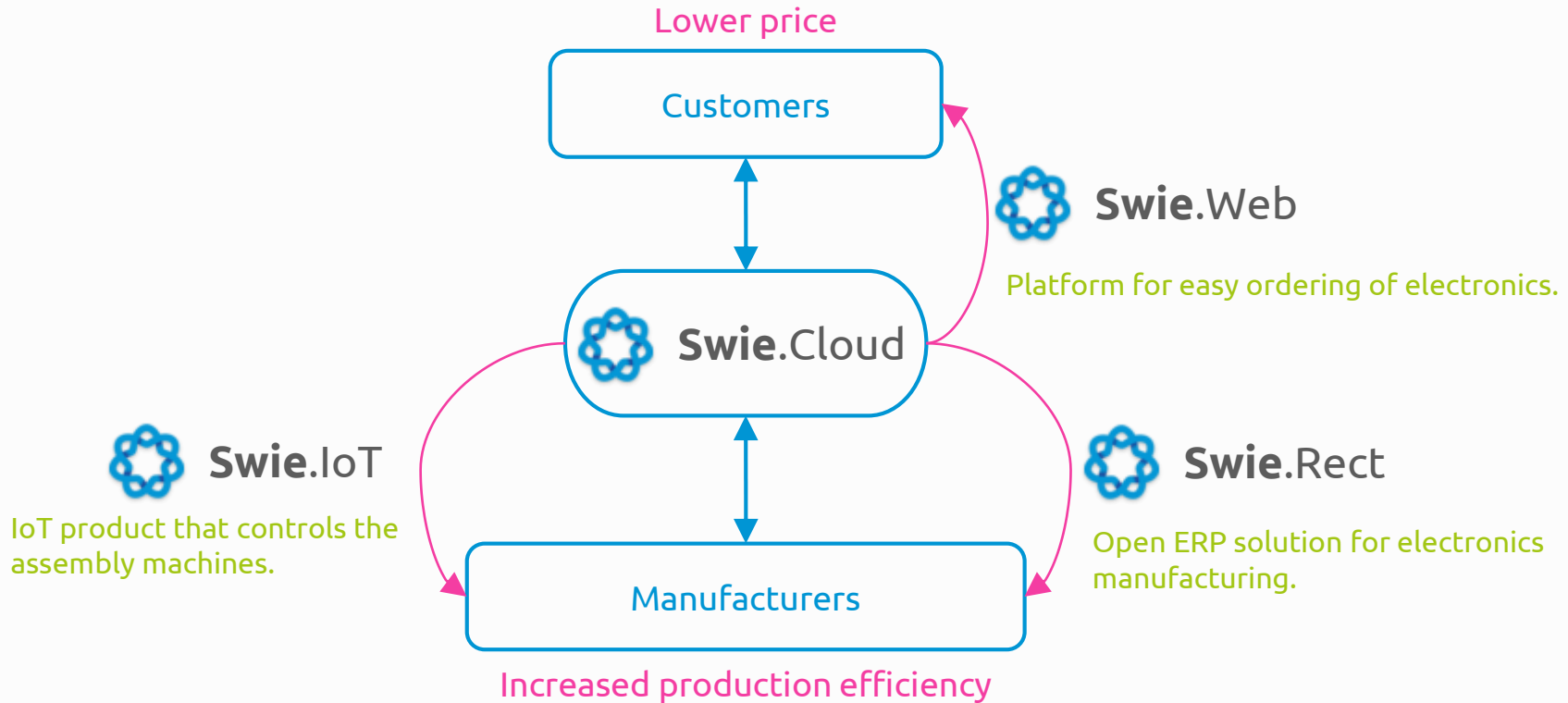
Factories had **0** R&D investment in the past **15** years.



The illustration depicts a smart factory environment. In the center, a large grey monitor displays the text 'Swie's Industry 4.0 Smart Factory'. Two robotic arms, colored in blue, teal, and orange, are positioned on either side of the monitor, appearing to interact with it. The background is filled with various grey gears of different sizes. In the foreground, there are icons for a desktop computer monitor on the left and a laptop on the right, both with red wireless signal icons above them. The overall style is clean and modern, using a color palette of greys, blues, teals, and oranges.

# Swie's Industry 4.0 Smart Factory

# Business Model

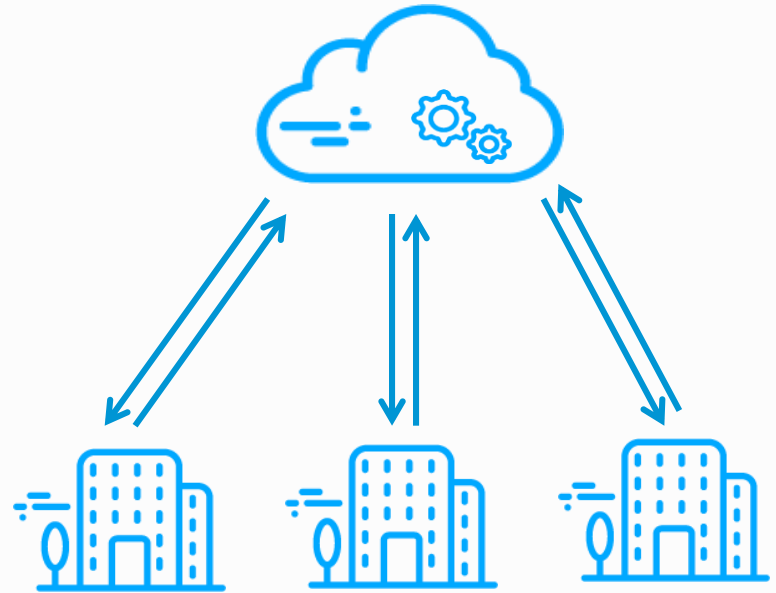


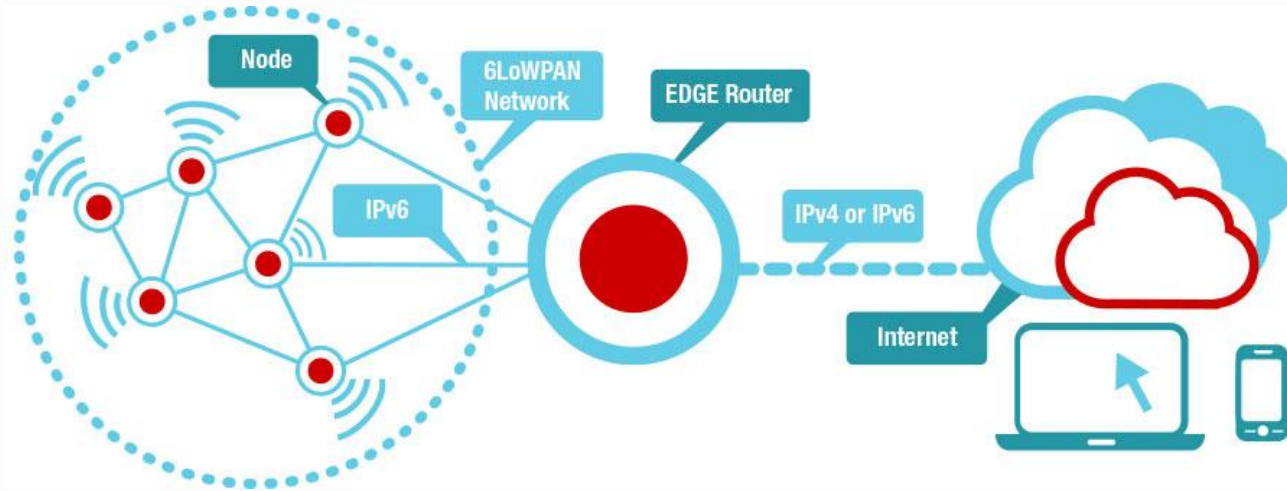


## Network effect:

- Predictive maintenance
- Cross-factory setup data

Improves **efficiency** and **yield**.

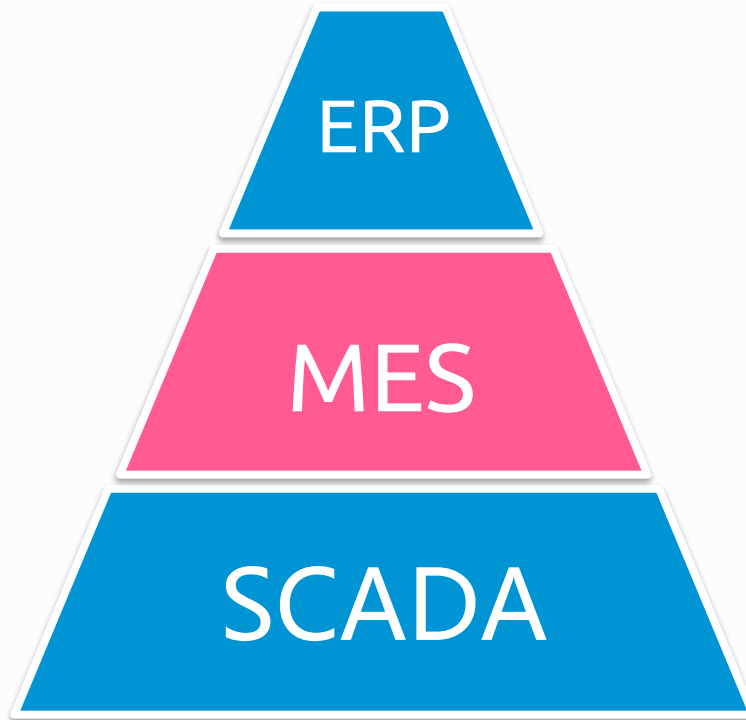
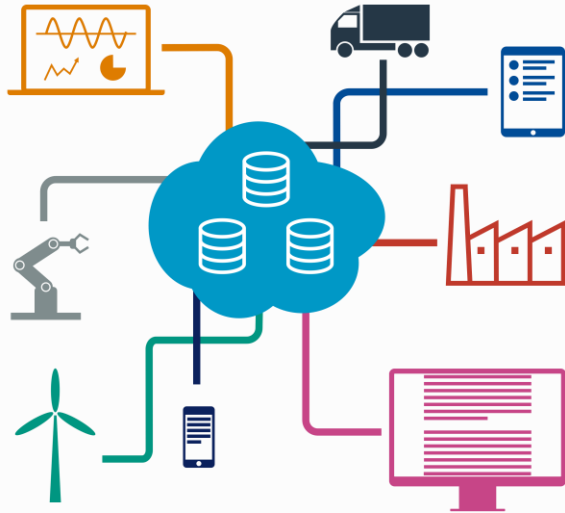




# Technology – IoT RTOS

OS	Min. RAM	Min. ROM	C Support	C++ Support	Multi-thread	Without MMU	Modular	Real-time
Contiki	< 2kB	< 30kB	●	✘	●	✓	●	●
Tiny OS	< 1kB	< 4KB	✘	✘	●	✓	✘	✘
Linux	~ 1MB	~ 1MB	✓	✓	✓	✘	●	●
Swie IoT	~ 1.5kB	~ 5kB	✓	✓	✓	✓	✓	✓

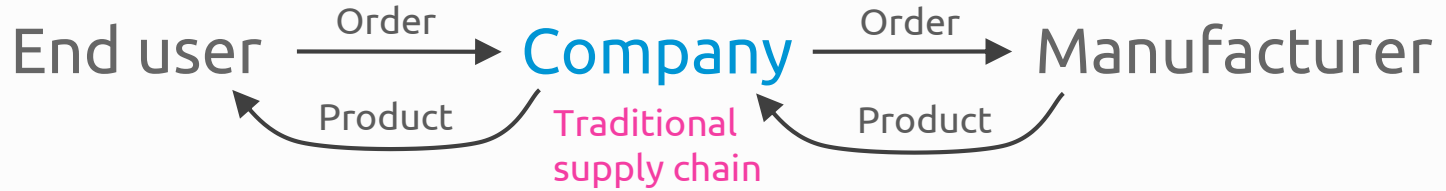
# Swie.ERP-MES



Partners:



# Enables New Business Model



Streamlining supply chain  
Zero inventory  
Enables new business models for hardware companies



“We make dumb factories smart.”



Swie.io



Benjamin Zhai [ben@swie.io](mailto:ben@swie.io)  
Radu Diaconescu [radu@swie.io](mailto:radu@swie.io)  
Aubrey Mnisi [aubrey.mnisi@swie.io](mailto:aubrey.mnisi@swie.io)