

# Introducing the Ci40 IoT kit

## Let's make IoT real

Platforms for building, scaling and powering the Internet of Things

# Contents



## Introduction

Ci40 IoT Kit

Kit Demo

Collaboration

# creator team here today



*Keno Mario-Ghae*



*François Berder*



# A global technology leader

A technology powerhouse for  
multimedia, processors, communications  
and cloud IP







**Our technology  
is everywhere**



**PowerVR**  
by Imagination

**MIPS**  
by Imagination

**Ensigma**  
by Imagination

# Contents



Introduction

**Ci40 IoT Kit**

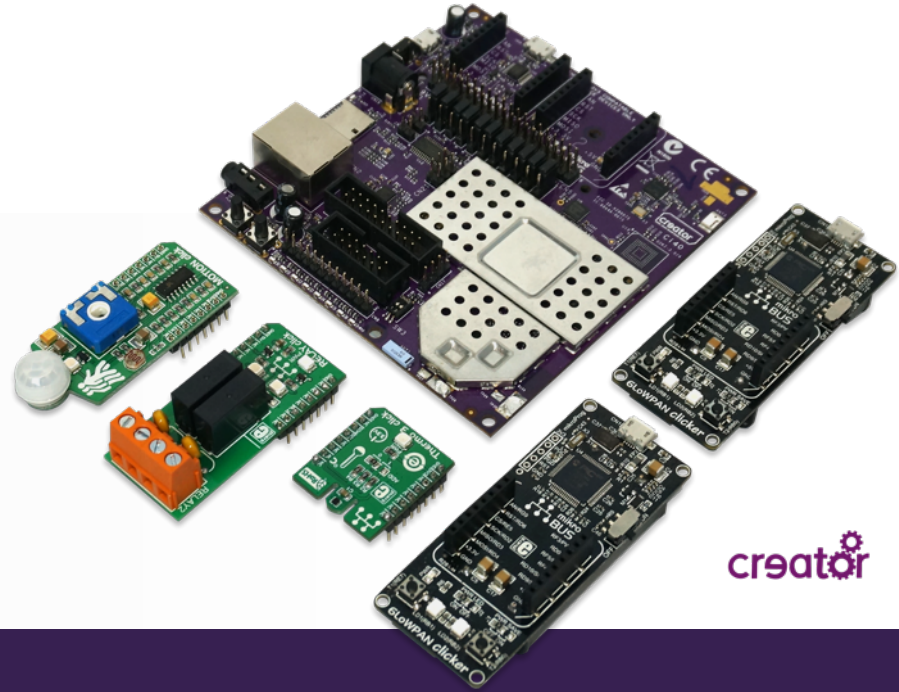
Kit Demo

Collaboration

# MIPS based IoT-in-a-Box

## Platform & hub

- All the required building blocks to develop a wireless IoT system
- Including sensors, wireless protocols, IoT gateway, cloud & open source examples



creator

## Technologies

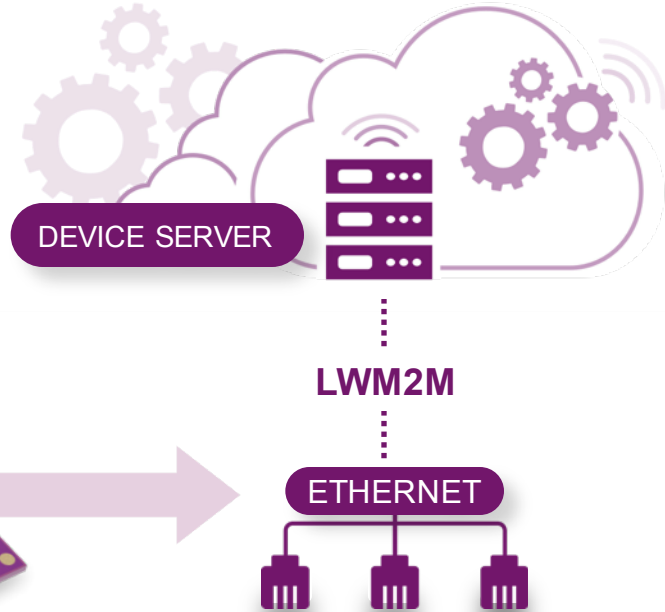
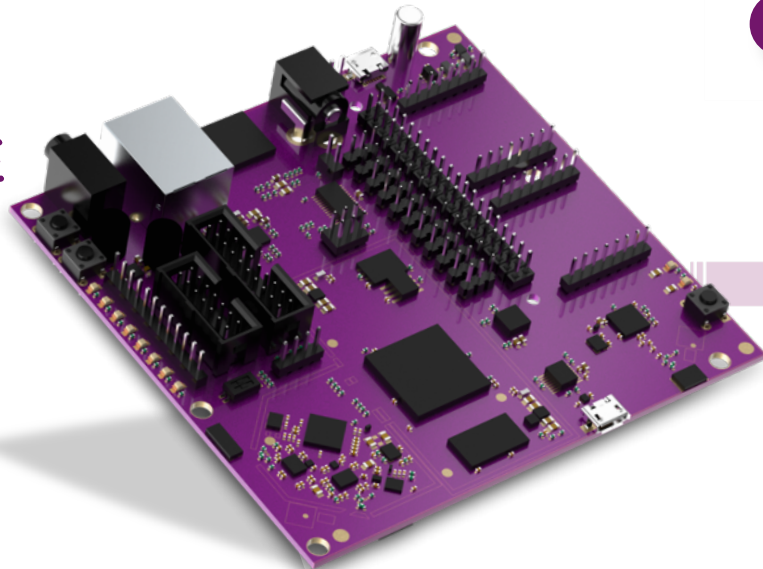
- 550MHz Dual-core, dual-thread MIPS CPU
- Enigma Wi-Fi 802.11 AC 2x2
- BT and BTLE
- Cascoda 802.15.4
- Ethernet
- Cloud connected

# The Creator IoT Framework

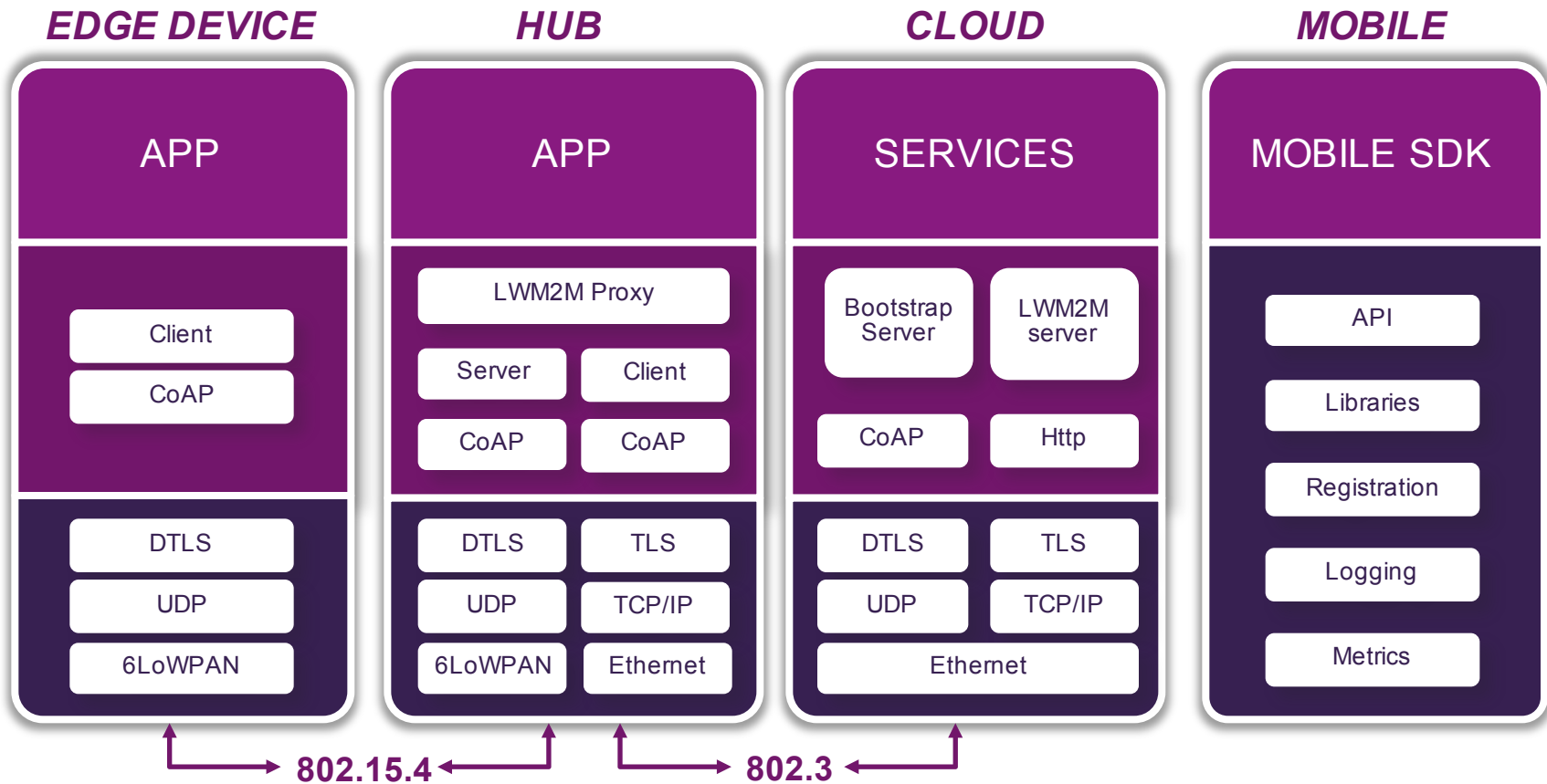
## Wireless Remote Nodes

- Sensing
- Actuation

## IoT Hub and Gateway

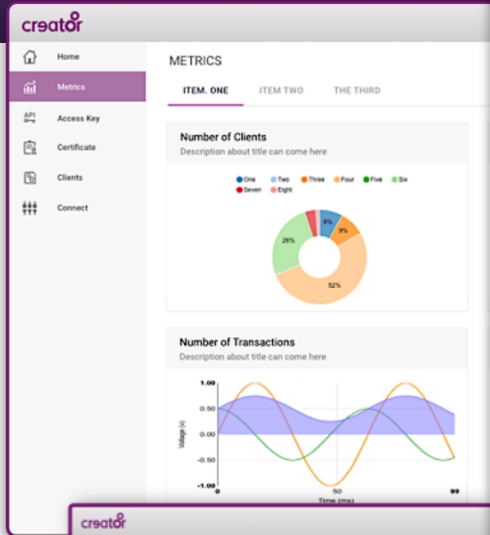


# Complete Open-source Reference Design Available Now



# Creator Developer Console

Web and desktop application



**ACCESS KEY**  
Access keys allow you to authenticate your Clients

One access key can be used for multiple clients, or you can generate multiple key combinations to secure...

Key Name	Access Key Number	Copy
Creator_Client	8345693-1433-4004-923F-33823e68027e12e68B21e	COPY
IoT_Client2	8345693-1433-4004-923F-33823e68027e12e68B21e	COPY

**Home**

**Recent post from blog**

**How to boot the Creator Ci40 board**  
Charlie Swanson 05-14-2016

Creator Ci40 is a development board based on a cXT200 chip optimized specifically for IoT applications which contains a dual-core, dual-threaded 550 MHz MIPS interAptiv CPU with 32k I&D L1 cache and 512k L2 cache and an IEEE754 Floating Point Unit coupled with an Enigma C4500 Wi-Fi radio processor. Creator Ci20 is preloaded with OpenWrt; additional operating systems (including Brillo, Debian, Buildroot, etc.)

**Recent post from Forum**

- Ci40 - The Ultimate IoT Dev Kit
- Markdown testing
- How did you hear about Ci40?
- Ci40 docs page link (+ random tests)
- Tagging each other in posts
- Wi-FIRE useful links
- Setting the category for a topic

**Creator on Hackster**

**Creator Ci20**  
Creator Ci20 is a development board based on an Ingenic JZ4780 SoC which includes a 1.2 GHz dual-core MIPS32 processor and PowerVR SGX540 GPU.

**Creator on Instructables**

**Creator Ci40**  
Creator Ci40 is a development board based on a cXT200 chip optimized specifically for IoT applications which contains a dual...

**creator hour**  
Every Wednesday  
12:30 to 13:30 pm (BST)

**Lunch & Learn with Creator**  
Grab a sandwich and join us for "Lunch & Learn" webinar event. Every Wednesday at 12:30 (BST)

# Contents



Introduction

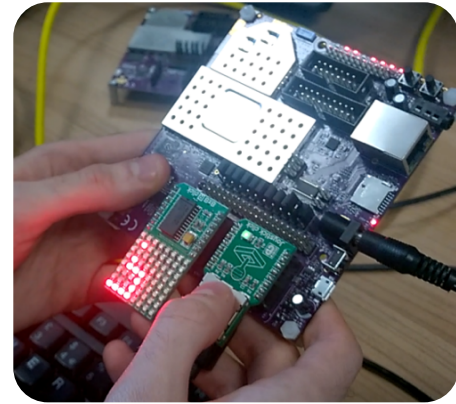
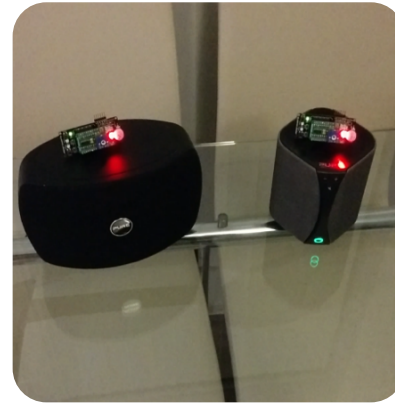
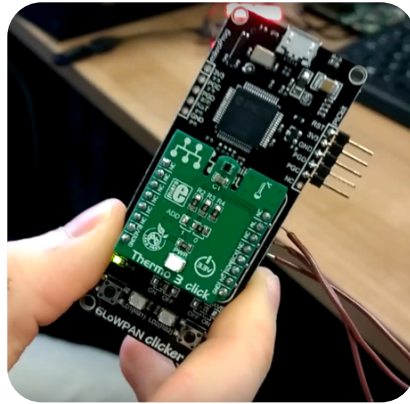
Ci40 IoT Kit

**Kit Demo**

Collaboration

# Kit Demo

creator





# Contents



Introduction

Ci40 IoT Kit

Kit Demo

**Collaboration**

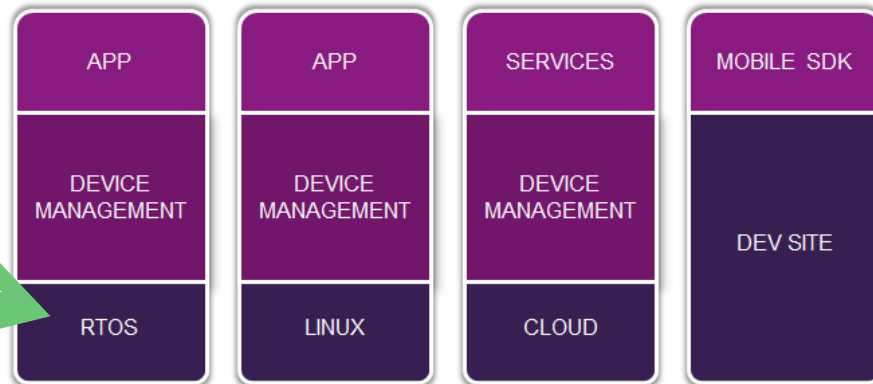
# We need your help to put RIOT on MIPS



## 6LoWPAN Clicker specifications

- 80MHz MIPS-based PIC32MX MCU from Microchip Technology
- [Cascoda](#) 802.15.4 radio
- [Contiki](#) RTOS
- 6LoWPAN communication
- 2 x AAA batteries for remote operation

## Software IoT comms stacks & device management



## Partners



# RIOT

# Collaboration

*We are looking for partners and collaborators.*

*We have expertise in MIPS*

*You have expertise in RIOT OS*

*Working together to create better solutions, faster.*



# Finding more information



<https://www.instructables.com/id/creatordev>



<https://github.com/Creatordev>



<https://hackaday.io/creator>



[https://www.thingiverse.com/Creator by Imagination/](https://www.thingiverse.com/Creator%20by%20Imagination/)



<https://www.kickstarter.com/projects/imgtec/creator-ci40-the-ultimate-iot-in-a-box-dev-kit>



<https://www.hackster.io/creator>



[https://www.youtube.com/channel/UCV6\\_pMJJi5BIYptluM91UZQ](https://www.youtube.com/channel/UCV6_pMJJi5BIYptluM91UZQ)



<https://www.facebook.com/MIPSfans/>



<https://twitter.com/MIPSdev>



[www.creatordev.io](http://www.creatordev.io)

# Let's Collaborate



***Keno Mario-Ghae***

***Project Engineer, Creator***

***Email: [keno.mario-ghae@imgtec.com](mailto:keno.mario-ghae@imgtec.com)***

***Skype: keno.mario.ghae***

***Mobile: +44 (0) 7849128080***

